

Name: \_\_\_\_\_

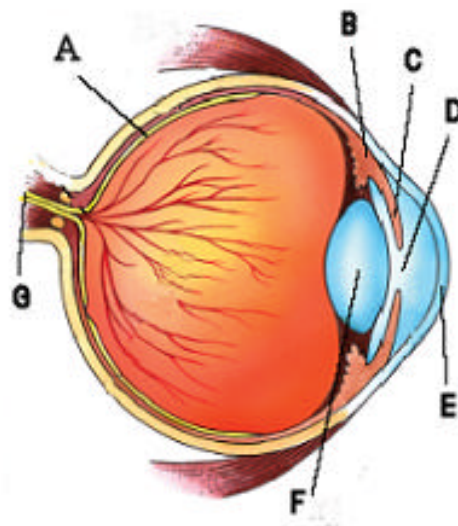
Q.1 List the five senses and the organ for each sense.

Number	Sense	Organ
1		
2		
3		
4		
5		

(10)

Q.2 List the parts of the eye shown here.

- A - \_\_\_\_\_  
 B - \_\_\_\_\_  
 C - \_\_\_\_\_  
 D - \_\_\_\_\_  
 E - \_\_\_\_\_  
 F - \_\_\_\_\_  
 G - \_\_\_\_\_



(14)

Q.3 What is the name of the nerve that carries the message from the eye to the brain?

Ans: \_\_\_\_\_

(2)

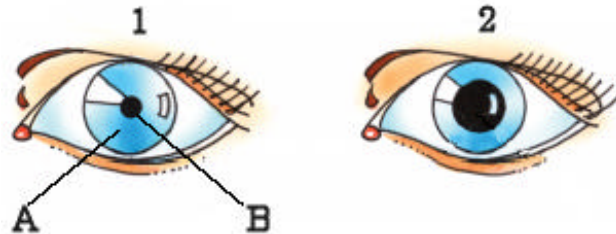
Q.4 The central nervous system consists of the \_\_\_\_\_ &amp; \_\_\_\_\_

(4)

Q.5 In the eyes below (1 and 2), which eye is in a dark room? Ans: \_\_\_\_\_

Name parts A \_\_\_\_\_ and B \_\_\_\_\_

(5)



Q.6 The \_\_\_\_\_ nerves carry a message from the sense organ to the brain or spinal cord, and the \_\_\_\_\_ nerves carry the message back to the muscle. (4)

Q.7 Give two roles of the brain? \_\_\_\_\_ and \_\_\_\_\_ (4)

Q.8 Give two ways in which good senses might help an animal survive.

(i) \_\_\_\_\_

(ii) \_\_\_\_\_